

Gliding Patio Doors

Installation and Finishing Instructions



Materials you will need



You will also need to have 15 to 40 ft of Jamb Extensions or Your Choice of Interior Trim

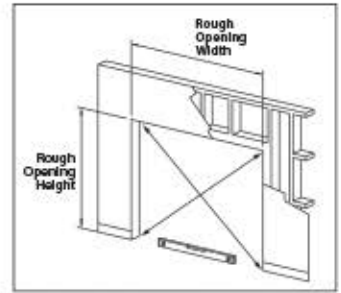
Tools you will need



Installation Instructions

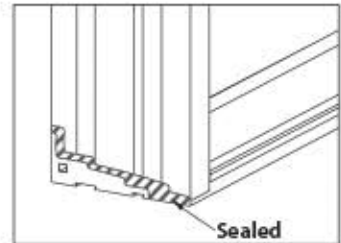
ROUGH OPENING INSPECTION

1. The rough opening should be 3/4 wider than the frame width, and 1/2" higher than the frame height.
2. Check subfloor for level and clean away all debris before setting door unit.
3. Check rough opening for plumb and square by measuring diagonal. If it is not, correct as necessary.

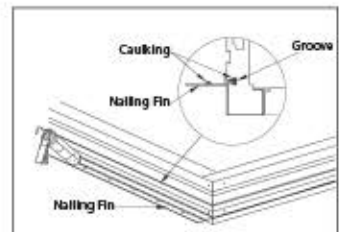


INSTALLING THE UNIT

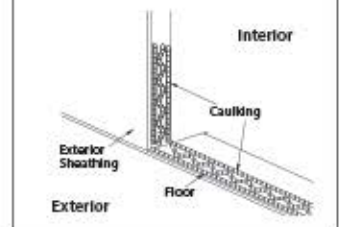
4. Before installation inspect corners of factory assembled frame for damage to the joints. If damaged reseal with a silicone or urethane sealant to eliminate chance of leakage at joint.



5. If using the provided nailing fins, apply sealant to the grooves around the frame before inserting. Staples can be used to secure the nailing fins if desired. The nailing fins are intended to be an added moisture barrier only. Pre-drilled pilot holes around frame must be used for proper installation.



6. Apply sealant on the interior side of the nailing fin along the pre-punched holes. Proper application of sealant will squeeze through holes when unit is set against rough opening.

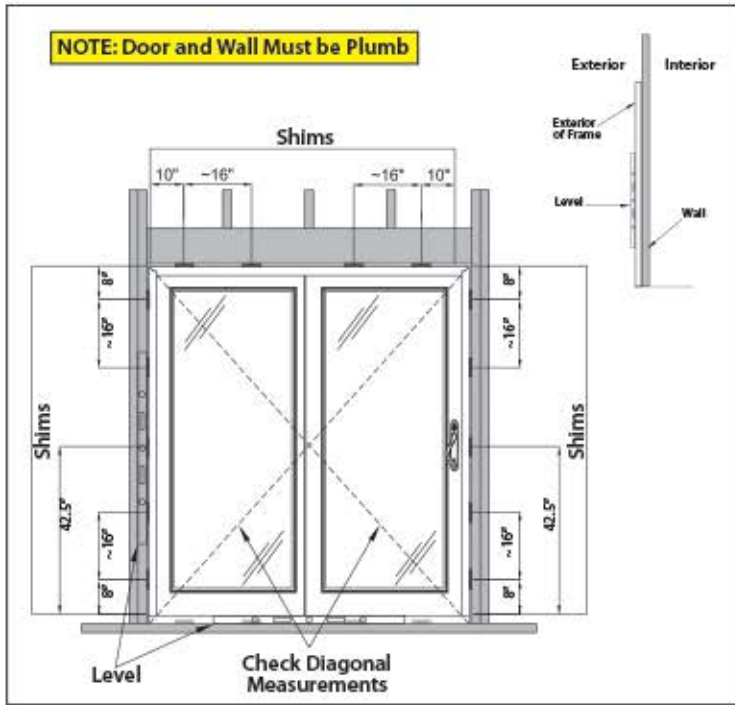


7. Apply at least one (1) full tube of sealant along the entire length of the floor board.

8. Move door frame into rough opening, and center it. Temporarily fix an upper corner of the nailing fin with a 2" roofing nail and secure the corner head jamb with a #10x3" flathead screw from the interior side.



NOTE: Door and Wall Must be Plumb



9. Use level to check if the jambs are straight and plumb. The sill must be leveled and straight. Make sure the diagonal measurements of the entire frame are equal. If necessary, shim the corners 4" from the sill and head jamb.

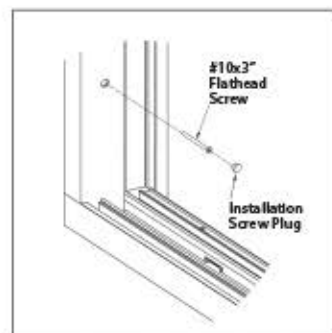
10. Place additional shims every 16" around jambs. Shim at keeper location and at all of the pre-drilled installation screw holes. Recheck plumb level and square and adjust as necessary.

11. Unlock door and open active panel about half the width of the panel, remove active panel by lifting panel up and out from inner side. Make sure the Anti-lift block is parallel to the head jamb.

(THIS STEP NOT NECESSARY WHEN INSTALLING A SINGLE STATIONARY UNIT)

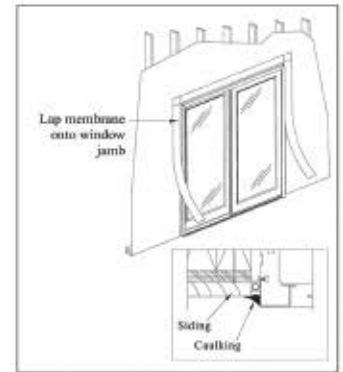


12. Use #10 x 3" flat head screw to secure the unit through the predrilled pilot holes through the jambs.



SEALING THE INSTALLATION

13. Apply caulking on the top joints of the nailing fin.
14. Lap vertical strips of self sealing adhesive membrane (4" wide) onto the jambs' nailing fin and over the exterior sheathing.
15. Install another layer of adhesive membrane lapping onto head jamb nailing fin and exterior sheathing.



INSTALLING THE ACTIVE PANEL AND ADJUSTING HARDWARE

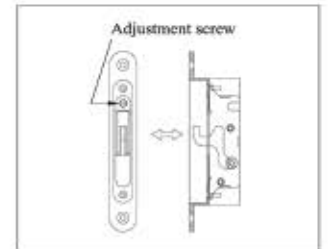
(THIS STEP NOT NECESSARY WHEN INSTALLING A SINGLE STATIONARY UNIT)

16. From inside reinstall active panel by inserting top of panel into the head jamb and aligning bottom on slider track. Check for proper operation.
17. If units needs further adjustment after installation follow procedure below.

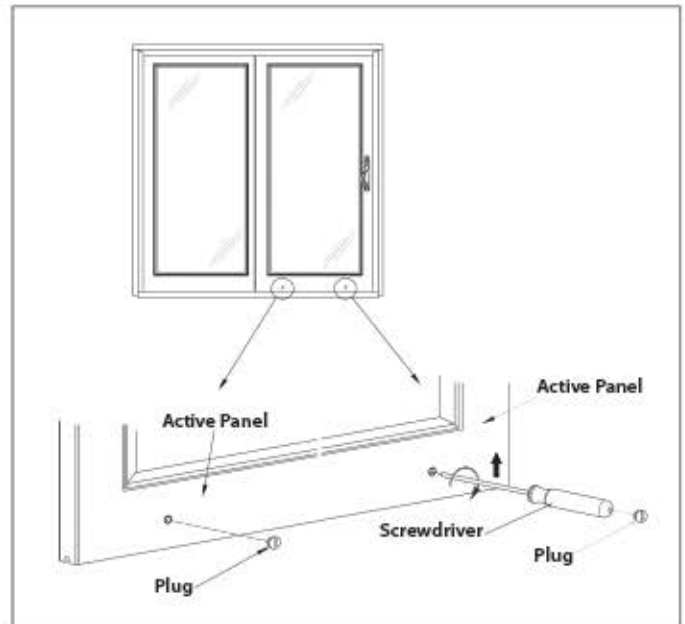
LOCKING INSTRUCTIONS

(THIS STEP NOT NECESSARY WHEN INSTALLING A SINGLE STATIONARY UNIT)

18. Flat head adjustment screw on single point lock can be adjusted to move latch in or out.
19. Lock Keeper (on side jamb) can be moved up or down for further adjustment.
20. Rollers can also be adjusted up or down.



NOTE: When adjusting the rollers, lift the active panel up to take the weight of the door panel off of the rollers. If the panel is still installed while adjustments are being made the stainless steel rollers can be damaged which will effect the performance of your MP Door.



CLEANING INSTRUCTIONS

- Door and jamb may be cleaned with mild detergent and water.
- Do not use any solvent, acids or abrasives on any part of the door.
- To clean the glass, use a soft clean grit-free cloth and mild detergent.
- Keep weep holes clean and clear of obstructions.

Staining Guide



Materials Needed

- A. Rubber gloves
- B. Masking tape
- C. Mineral Spirits
- D. Lint-free cloth
- E. 2" bristle brush
- F. Gel Stain, such as ZAR™ Stain, Wood Kote®, Jel'd Stain, Minwax® Gel Stain, etc.
- G. Minwax PU coating is highly recommend after staining for extra protection.



Step 1. Surface Preparation

** Do not sand surface

1. Lay door horizontally on an off-the-floor padded surface (saw horse or table); allow it to acclimate to room temperature for at least 24 hours before finishing.
2. Remove hardware components and mask off areas that you do not want to paint (such as glass inserts).
3. Brush door lightly to remove any loose dirt or particles.
4. Clean door with paint thinner (mineral spirit), make sure all residue is removed and the door is dry before finishing.



Step 2. Stain Application FIRST COAT

1. Stain one section of the door at a time. Apply thin and even amount of stain with cloth. Using a light circular movement, work the stain into the embossed grain.
2. Then, with a CLEAN RAG remove all excess finish. Using long strokes, move in the direction of the grain. Work quickly.
3. If lap marks appear, immediately apply more stain to dissolve them, working the area to an even color. This coat primarily leaves the stain in the grain pattern.



SECOND COAT

Allow the door to dry for at least 24 hrs. between coats.

1. Work on one section of the door at a time.
2. Using a soft lint-free cloth, apply a liberal coat of stain.
3. Working quickly while the stain is wet, use a clean and dry 2" bristle brush to remove the excess stain and create a uniform look.
4. Make long, quick brush strokes in the direction of the grain.
5. Using paper towels or a rag, be sure to remove any excess stain as it accumulates on the brush.
6. If only the interior face of the door is to be stained, stain the woodgrain edge of the door. If both sides of the door are to be stained, stain both edges.



Step 3. PROTECTIVE TOP COAT

Apply polyurethane top coat with UV inhibitors like ZAR™ Exterior polyurethane, Wood Kote® Flagship UV, Minwax® Fast Drying Polyurethane for applications.

1. After stain has completely dried (24 hours), mix topcoat well and apply evenly using a clean dry 2" bristle brush to work topcoat into corners.
2. Apply two or three coats of finish, allowing at least 24 hours of drying time between each application.

NORMAL MAINTENANCE

By exposure and weathering from sun, moisture and air pollutants, a well finished door will be affected. Normal maintenance is to reapply the topcoat approximately every two years.

Painting Guide



Materials Needed

- A. Rubber gloves
- B. Masking tape
- C. Mineral Spirits
- D. Lint-free cloth
- E. 4" bristle brush

Contact your local painting professional for the paint choice best suited for your new patio doors in your area.



Step 1. Surface Preparation

** Do not sand surface

1. Lay door horizontally on an off-the-floor padded surface (saw horse or table); allow it to acclimate to room temperature for at least 24 hours before finishing.
2. Remove hardware components and mask off areas that you do not want to paint (such as glass inserts).
3. Brush door lightly to remove any loose dirt or particles.
4. Clean door with paint thinner (mineral spirit), make sure all residue is removed and the door is dry before finishing.
5. The primer must be completely dry before applying any finish topcoat.



Step 2. Painting

1. Apply exterior grade paint with 4" brush in the direction of the grain.
2. If applying a second coat, follow the manufacturer's directions for drying time between coats.



CAUTION

1. When applying stain or topcoat, make sure the working area is well ventilated.
2. Keep away from heat and flame as the stain and topcoat are combustible.
3. The stain and topcoat may cause skin and eye irritation. Avoid contact with skin and eyes.
4. Keep out of reach of children.
5. We do not recommend staining with dark colors.

FIRST AID

1. If swallowed, wipe out mouth and give 1-2 glasses of water. Call physician or poison center immediately.
2. In case of eye contact, immediately flush eyes with water at least 15 minutes. Get medical attention if irritation develops and persists.
3. For skin contact, wash thoroughly with mild soap and water. Get medical attention if irritation develops and persists.
4. If affected by inhalation, immediately move to fresh air. If symptoms persist, call physician.



When using stains, mineral spirits, paints, or other hazardous materials, always read and follow their manufacturer's instructions. Always ensure that the work area is well ventilated, clear of obstructions, and away from open flame, heat or source of spark. MP Doors makes no representations as to the proper use of other manufacturer's products.